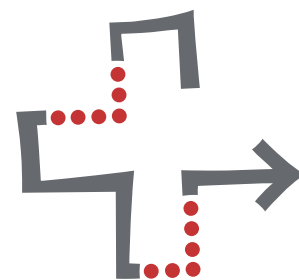




The Swiss Path
URNERSEE

LUZERN 
FACEBNE
SWISS MADE



The Swiss Path

Walking with history through
the heart of Switzerland

The Swiss Path: “A magnificent part of Swiss heritage”

On the occasion of the 7th centenary of the Swiss Confederation, a hiking trail – 35 km long – was built around the southernmost end of Lake Lucerne. Each canton is designated a section of the path, with 5-mm of the trail representing one person.

The Swiss Path – walking with history through the heart of Switzerland

In 1991, on the occasion of the 7th centenary of the Swiss Confederation, a hiking trail was built around Lake Uri, the southernmost and most romantic part of Lake Lucerne. The Swiss Path begins on the Rütli meadow, the cradle of Switzerland, and leads through Seelisberg,



Bauen, Flüelen, Sisikon and Morschach to Brunnen. The trail is 35 kilometers long, clearly marked with signs and well constructed. Each Swiss canton is allocated a stretch of the trail according to the number of its inhabitants, with each citizen being represented by 5 mm of the path. Marble stones bearing the coats of arms of the cantons and the dates of their entry into the Swiss confederation mark the different sections of the path.

The path starts at the Rütli, cradle of the Swiss Confederation, and leads past the panorama vantage point of Seelisberg (“Schiller-Balkon”) and the small castle of Beroldingen to Bauen, the “Riviera of Lake Uri”. Along the lake, at times through rock grottos, the hiker is led to Seedorf through the lower part of the Isenthal (the “Bärenweg” trail is here), further on through the nature reserve on the Reuss delta, past the Kneipp facilities, to Flüelen. Glass-blowing can be seen here. Slightly ascending and

descending, the path winds past the Axenfels, the Tellskapelle (William Tell Chapel), and past the largest carillon in Switzerland to Sisikon. On the ascent towards Morschach (water adventure park), the hiker will enjoy a magnificent view of the lake and the glacier-topped mountains. After its descent to Brunnen, the path ends on the “Auslandschweizerplatz” (dedicated to Swiss living abroad), which is located directly on the shore of Lake Lucerne.

We are looking forward to welcoming you to the Swiss Path!

For more information:

IG Pro Weg der Schweiz
P.O. Box 684, CH-6440 Brunnen
Telephone: +41 (0)41 825 00 46
Weather report: +41 (0)41 820 15 34
Internet: www.weg-der-schweiz.ch
e-mail: info@weg-der-schweiz.ch

Stretches of the Path

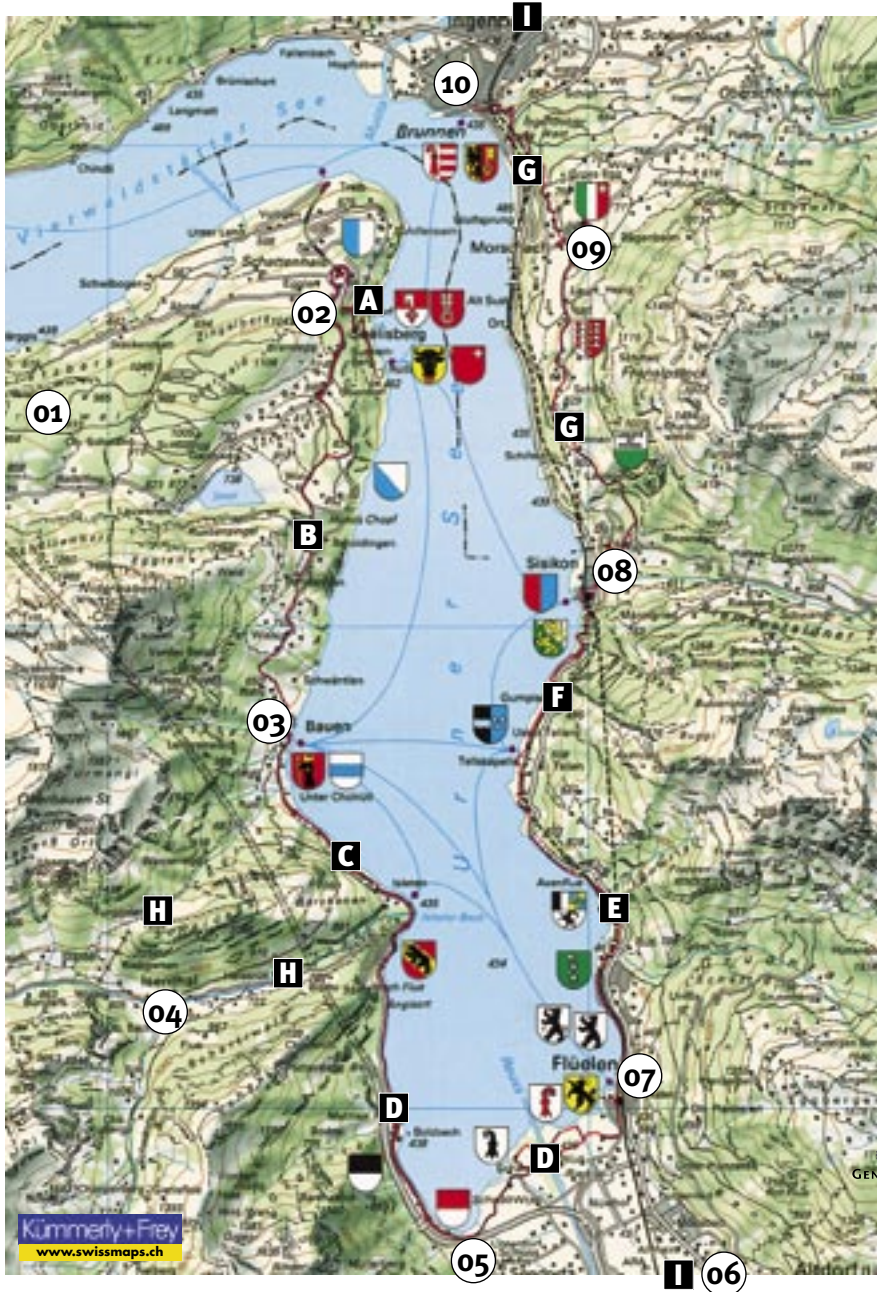
The stretches between the various destinations can be combined freely and planned according to one's abilities and the amount of time available. The Swiss Path can be walked in either direction. There are connections to the boat, bus or train at every destination; a hiking trip combined with these various means of transportation renders the excursion a great pleasure for young and old.

A Rütli–Seelisberg
Walking time: 60 minutes
Difference in altitude: 350 meters
Forest path, gentle ascent. (Option: use the Treib – Seelisberg mountain railway.)

B Seelisberg–Bauen
Walking time: 130 minutes
Difference in altitude: 350 meters
Path with breathtaking panoramic view of Lake Uri. Steep descent with a stepped path to Bauen for the last 30 minutes. Accessible with baby carriages and wheelchairs: Seelisberg–Marienhöhe–Wyssig

C Bauen–Isleten
Walking time: 40 minutes
Difference in altitude: 0 meters
Flat, even path, mostly through galleries (ideal for any weather conditions) and along the lakeside. Accessible with baby carriages and wheelchairs.

D Isleten–Seedorf–Flüelen
Walking time: 120 minutes
Difference in altitude: 0 meters
First along the lakeshore, then through a magnificent nature reserve on the Reuss delta, as well as Kneipp facilities. Accessible with baby carriages and wheelchairs.



Contents

Public transportation services	4
Suggestions for hiking trips	5
<hr/>	
Destinations on the path	6–15
01 Emmetten	6
02 Seelisberg	7
03 Bauen/Isleten	8
04 Isenthal	9
05 Seedorf	10
06 Altdorf	11
07 Flüelen	12
08 Sisikon	13
09 Morschach	14
10 Brunnen	15
<hr/>	
Museums in Schwyz	10
The legend of William Tell	11
Tell Pass	16

All prices listed in euros in this brochure are standard prices (ca. CHF 1.50) and are subject to change depending on the current rate.

Pictures: V. Marty, Bauen; P. Rügger, SGV; TSB, Seelisberg; Ch. Perret, Emmetten



E Flüelen–Tellskapelle
 Walking time: 100 minutes
 Difference in altitude: 75 meters
 Spectacular path through the breathtaking scenery of the old Axenstrasse, slightly ascending and descending to the carillon.

F Tellskapelle–Sisikon
 Walking time: 45 minutes
 Difference in altitude: 75 meters
 Romantic path directly on Lake Uri. Final ascent to the Urnerloch before Sisikon. Accessible with baby carriages and wheelchairs only from the Tellsplatte boat landing to the Tell Chapel.

G Sisikon–Morschach–Brunnen
 Walking time: 170 minutes
 Difference in altitude: 390 meters
 Ascent from Sisikon to the panorama vantage point near Morschach with exceptionally fantastic view of the Alps, descent with romantic forest path from Morschach to Brunnen. Option for descent: bus Morschach–Brunnen.

H Additional loop
 Bauen–Isenthal–Isleten
 Walking time: 180 minutes
 Difference in altitude: 400 meters
 Ascent and descent over mountain paths with beautiful vantage points. Relaxing walk through the valley between destinations. Options for ascent/descent: Postbus Isleten–Isenthal.

I Historical information
 Forum of Swiss History (www.musee-suisse.ch), Museum of Swiss Charters (www.sz.ch) in Schwyz, Historical Museum in Altdorf and Tell Museum in Bürglen.

Public transportation services on the Swiss Path

A complete network of buses, boats, trains and mountain railways enables you to choose any location as the starting point or destination of your trip.

SBB – Swiss Federal Railways

Trains run regularly every hour or every 30 minutes from Zurich, Lucerne and Arth Goldau to Brunnen, Sisikon and Flüelen.

Boat trips on Lake Lucerne

Five nostalgic paddle steamers and 15 other passenger boats are waiting to take you on a relaxing trip. During the summer months, the boat timetable at the lakeside locations along the Swiss Path coincides with train connections in Lucerne, Brunnen or Flüelen almost every hour.

(Winter season: Sundays only!)

Express “Swiss Path” service: fastest daily connection from Lucerne to Treib, Brunnen and on Lake Uri from May to October.

Treib-Seelisberg mountain railway

The mountain railway leads from the boat landing at Treib directly to Seelisberg – the highest point of the Swiss Path. The mountain railway runs according to every boat timetable.

PostAuto/Cantonal bus services in Schwyz

Buses run approximately every 30 minutes from Brunnen, Morschach and Altdorf to Seedorf. The bus from Bauen to Isleten, as well as from Altdorf via Seedorf to Isenthal, can be taken mornings, at noon, afternoons and evenings.

Rotary Club Uri

In commemoration of the 50th anniversary of the Rotary Club Uri, all the Uri communities along the Swiss Path were presented with a drinking water fountain with benches/seats. This enables hikers visiting the Rütli Meadow, Bauen, Isleten, the Reuss Delta at Seedorf, Flüelen and above Sisikon to take a rest and quench their thirst with fresh spring water.

Combined package deals such as the “Swiss Path” day ticket will provide you unlimited pleasure on the Swiss Path!

RailAway

“Swiss Path Hiking Pleasure” includes a 10% reduction on the combined RailAway package deal which is offered by Swiss Federal Railway’s leisure time provider. Apart from the railway ticket to Lake Lucerne, this package comprises the following means of transportation of your choice: all boat and rail routes from Lucerne to Flüelen, the Treib-Seelisberg mountain railway, bus routes from Brunnen to Morschach, PostAuto routes from Altdorf to Isenthal and from Seelisberg to Beckenried, as well as an on-board voucher for refreshments worth CHF 7

Further information can be found in the RailAway “Plausch” brochure. The Swiss Path combined package deal is available at all Swiss railway stations.

Rotary drinking fountain on the Swiss Path



Informationen:

SBB – Swiss Federal Railways

Telephone +41 (0)900 300 300 (CHF 1.19/Min.)
Internet www.sbb.ch oder www.railaway.ch

Schiffahrt Vierwaldstättersee

Postfach, CH-6002 Luzern
Telephone +41 (0)41 367 67 67
Fax +41 (0)41 367 68 68
Infomat +41 (0)41 367 66 66
e-mail info@lakelucerne.ch
Internet www.lakelucerne.ch

Treib-Seelisberg-Bahn

Bahnhof, CH-6377 Seelisberg
Telephone +41 (0)41 820 15 63
e-mail tsb@seelisberg.com
Internet www.seelisberg.com

PostAuto

Regionalzentrum Zentralschweiz, CH-6002 Luzern
Telephone +41 (0)41 368 10 10
e-mail postautozch@post.ch
Internet www.postauto.ch/lu

Weather information for Lake Uri

Internet www.lakelucerne.ch
Telephone +41 (0)41 820 15 34

Auto Uri AG

Flüelerstrasse 6, 6460 Altdorf
Telephone +41 (0)41 870 10 88
Fax +41 (0)41 871 20 50
e-mail mail@aagu.ch
Internet www.aagu.ch

Carillon in Sisikon



Suggestions for hiking trips

The Swiss Path offers a variety of walking and hiking trips suitable for people of any age and general physical condition.

Hiking and walking: detailed descriptions of the routes along the Swiss Path and 15 additional hiking trails along the lakeshore are available at the boat landings and on the boats – free of charge.

Guided tours, hiking trails accessible with baby carriages and wheelchairs: route suggestions for people of all ages are listed in two free brochures.

Walking and nordic walking: wide trails along the lakeshore for sportive hiking. With or without special nordic sticks, an ideal sport for your health. Most enjoyable along the fjord-like Lake Uri.

Schiller's Rock



Starting point: Brunnen

Hike from Brunnen up to Morschach, then over the panorama vantage point to Sisikon; cross the lake to the Rütli by boat. Visit the Rütli meadow (museum, “3-Länder-Quelle”, country inn). Hike up to Seelisberg; mountain railway to Treib, continue to Brunnen by boat. Total walking time: 4 hours.



Starting point: Morschach

Hike from Morschach down to Brunnen. Boat trip to Isleten and hike along the lake through the nature reserve of the Reuss delta to Flüelen (accessible with baby carriages). Boat trip across the lake to Brunnen, then bus to Morschach. Total walking time: 3 hours.



Starting point: Sisikon

Gently ascending and descending hike to the Tellsplatte, which houses the largest carillon in Switzerland. The trip continues below the romantic Axenfels to Flüelen. Boat trip to Isleten and hike through the romantic galleries to Bauen, the “Riviera of Lake Uri”. Return to Sisikon by boat. Total walking time: 3 hours.



Starting point: Flüelen

Boat trip to Treib, mountain railway to Seelisberg, easy walk down to the Rütli. Boat trip to Isleten and hike along the lake through the nature reserve of the Reuss delta to Flüelen (accessible with baby carriages). Total walking time: 3 hours.



Starting point: Seedorf

A hike along the lake to Isleten and ascent on a mountain path providing fantastic views of the romantic Isenthal valley. There is an option of taking the cable car up to the idyllic “Gitschenen Alp”. Return to Seedorf by Postbus. Total walking time: 3 hours.



Starting point: Isenthal

Ride by Postbus to Isleten and boat to the Rütli. Hike up to Seelisberg and over the panorama vantage point, past the small castle of Beroldingen, down to Bauen, then along the lakeside to Isleten. Return to Isleten with the Postbus to Isenthal. Total walking time: 3.5 hours



Starting point: Bauen

Hiking trail accessible with baby carriages and wheelchairs, situated directly on Lake Uri, first leading through romantic grottos, then past the nature reserve on the Reuss delta and the Kneipp facilities to Flüelen. Boat trip back to Bauen. Total walking time: 2.5 hours



Starting point: Seelisberg

Easy hike down to the Rütli. Boat trip to the Tell Chapel and a visit to the largest carillon in Switzerland. Romantic hike on a gently ascending and descending trail to Sisikon. Boat trip back to Treib and mountain railway to Seelisberg. Total walking time: 2 hours

The stretches between the various destinations can be combined freely and planned according to one's abilities and amount of time. The Swiss Path can be walked in either direction. There is a boat, bus or train connection at every destination; a hiking trip combined with any one – or several – of these forms of transportation renders the excursion a great pleasure for young and old.

Emmetten

Welcome to the sun terrace with a magnificent view (at 755 m)! From the A2 Lucerne-Gotthard motorway, Emmetten can be comfortably reached by car in 5 minutes (20 minutes from Lucerne) and is best served with public transportation. After a short journey through wooded areas, you will reach your holiday destination where, thanks to its elevation, you can enjoy tranquility as well as healthy, fragrant alpine air and marvel at an extremely diverse flora and fauna. Experience an active and dynamic village with lots to offer and numerous activities—whether you are enjoying Emmetten's natural surroundings or your children are having fun with GOLDI. We invite you to enjoy – and experience – your vacation.



Summer tips

- Package deals with overnight stays and excursions to GOLDI hotels
- Fun and playtime for children with GOLDI (during school holidays): lunchtimes (eating, drinking, playing), cinema, disco, story-telling, baking pizzas, making pasta, observing wild animals, stargazing, GOLDI family safaris Emmetten – Seelisberg – Klewenalp – Stockhütte includes 5 different means of transport and much more!
- Relaxation and pleasure for the entire family: numerous campfire sites (Swiss family campfire sites in Choltal), children's play areas in Emmetten, Choltal, Stockhütte and Klewenalp, a children's zoo at Stockhütte and a marmot park at Klewenalp, romantic ravines and forests, lush meadows, colorful mountain flowers and many magnificent vantage points with benches and picnic areas
- Sports: extensive, appealing and extremely varied network of hiking trails (accessible with baby carriages and wheelchairs), wildlife-observation trail with 16 informative signposts, St. Jakob route, mountain bike routes (including hire), climbing gardens, health spa, indoor swimming pool, steam room, solarium, massages, etc.), tennis courts, Emmetten paragliding school, swimming in the Seelisberg lake and much more!
- Conferences and seminars: modern infrastructure for your next conference in the most ideal of natural surroundings and numerous possibilities for teambuilding and supporting programs: your partners – Hotel Emmetten, Hotel SEEBLICK and Hotel Post, Emmetten. Interesting lectures, training evenings and weekends in Emmetten.
- Events and offers at: www.tourismus-emmetten.ch (under «Aktuell») and «Veranstaltungen»)

Winter tips

- Beautiful winter sport area Emmetten – Stockhütte – Klewenalp with pistes ranging from easy to difficult, ideal starting point for excursions into Central Switzerland, beautiful panoramic view
- Childcare available daily at Stockhütte and Klewenalp, snow kindergarten and snow sport school
- Unique, fabulous sled run from Stockhütte (at 1300 m) to Emmetten (at 755 m), night sledding
- Guided snowshoe tours, numerous winter hiking trails and much more!

Highlights



Flying school

Learn to fly in the most beautiful area of Central Switzerland. Passenger flights with paragliding for everyone, including children from the age of five.

Contact: Flugschule Emmetten AG
Telephone +41 (0)41 620 12 12
Internet www.flugschule-emmetten.ch



Niederbauen cable car (1750 m)

Hiking area with magnificent panoramic view, starting point of wildlife-observation trail, rare alpine and moor flora. Starting place for paragliders; mountain inn next to the cable car station.

Contact: Luftseilbahn Niederbauen
Telephone +41 (0)41 620 33 40
Internet www.niederbauen.ch

Hotels/Gasthäuser



Hotel SEEBLICK***

Telephone +41 (0)41 624 41 41
Fax +41 (0)41 624 42 42
e-mail info@hotelseeblick.ch
Internet www.hotelseeblick.ch

CHF ⚡ 116 ⚡ 182 ⚡ 70
EUR ⚡ 75 ⚡ 118 ⚡ 45



Hotel Engel

Telephone +41 (0)41 620 13 54
Fax +41 (0)41 620 60 37
e-mail info@engel-emmetten.ch
Internet www.engel-emmetten.ch

CHF ⚡ 63-70 ⚡ 106-120
EUR ⚡ 45-50 ⚡ 76-86



Hotel Post

Telephone +41 (0)41 620 13 51
Fax +41 (0)41 620 49 32
e-mail post.richi@bluewin.ch
Internet www.hotel-post.ch

CHF ⚡ 63-70 ⚡ 106-120
EUR ⚡ 45-50 ⚡ 76-86



Gasthaus Schlüssel

Telephone +41 (0)41 620 13 56
Fax +41 (0)41 620 13 56
e-mail hotel.schluessel.emmetten@freesurf.ch
Internet www.gasthaus-schluessel.ch

CHF ⚡ 40-45 ⚡ 80-90
EUR ⚡ 29-32 ⚡ 57-64



Berggasthaus Niederbauen

Telephone +41 (0)41 620 23 63
Fax +41 (0)62 756 18 86
Internet www.niederbauen.ch

CHF ⚡ 100-120 ⚡ 30-40/PERSON
EUR ⚡ 71-86 ⚡ 21-29/PERSON

Group accommodations



Ski- und Ferienlagerhaus Rinderbühl

Maximum 70 beds
Telephone +41 (0)41 790 11 52
Fax +41 (0)41 790 11 64
Internet www.pfarrei-risch.ch

CHF ⚡ 12/PERSON
EUR ⚡ 9/PERSON



Buochser Lagerhaus

Skiclub Buochs, maximum 56 beds

Telephone +41 (0)41 620 43 53
Fax +41 (0)41 622 13 53
e-mail buesche@bluewin.ch
Internet www.tourismus-emmetten.ch

CHF 340-440/NIGHT
EUR 243-314/NIGHT

Information

Tourismus Emmetten
Hinterhostattstrasse 4
CH-6376 Emmetten

Telephone +41 (0)41 620 15 64
Fax +41 (0)41 620 07 64
e-mail office@tourismus-emmetten.ch
Internet www.tourismus-emmetten.ch

Seelisberg



Seelisberg is situated on a peninsula on Lake Lucerne directly above the Rütli Meadow. The wonderful panoramic view of the lake and mountains, the tranquil location as well as its natural environment and landscape are ideal conditions for the peace and tranquility needed to tackle the stresses and strains of everyday life. Thanks to its central location, Seelisberg is the ideal starting point for excursions and trips on Lake Lucerne to the alpine passes, as well as other regions in Switzerland. Goldi Family Safari Klewenalp-Seelisberg, the most diverse round trip in Switzerland! 12 restaurants, 5 hotels, 25 holiday apartments and 2 camping sites await you!

Hotels



Hotel & Naturhaus Bellevue***	
Telephone	+41 (0)41 825 66 66
Fax	+41 (0)41 825 66 67
e-mail	hotel@bellevue-seelisberg.ch
Internet	www.bellevue-seelisberg.ch
CHF	♣ 95–115 ♣♣ 150–210
EUR	♣ 68–83 ♣♣ 107–150



Hotel Löwen	
Telephone	+41 (0)41 820 13 69
Fax	+41 (0)41 820 39 89
CHF	♣ 60–90 ♣♣ 100–180
EUR	♣ 36–64 ♣♣ 53–129



Hotel Montana	
Telephone	+41 (0)41 820 12 68
Fax	+41 (0)41 820 12 69
e-mail	hotel.montana@bluewin.ch
♣♣	with shower in corridor: discount CHF 10.–/person
CHF	♣ 55–60 ♣♣ 100–110
EUR	♣ 39–40 ♣♣ 71–79



Hotel Tell E&G	
Telephone	+41 (0)41 820 12 67
Fax	+41 (0)41 820 37 36
e-mail	info@hoteltell.ch
Internet	www.hoteltell.ch
CHF	♣ 60 ♣♣ 120
EUR	♣ 40 ♣♣ 80

Campgrounds/Sleeping in the hayloft/Group accommodations



Camping am Bergsee	
Located directly on a mountain lake, playground, volleyball, outdoor grills, wash rooms, recreation room; mid-May – mid-September	
Telephone	+41 (0)41 820 35 96
CHF	6–13
EUR	4–9



Family Oswald Ziegler	
Rustic, for groups/families, grill sites; price includes breakfast, maximum 25 guests	
Telephone	+41 (0)41 820 21 41, Fax +41 (0)41 820 21 41
e-mail	family-ziegler@bluewin.ch
CHF	14–23
EUR	9–16



Waldhütte	
Located on village outskirts in the forest, cooking facilities, parking spaces, playground, maximum 25 guests	
Telephone	+41 (0)41 820 12 66
CHF	320/DAY
EUR	229/DAY

Grill sites

- Rütli: with wood, seating, lots of space
- Village of Seelisberg (above church): with wood, tables and benches, water, lots of space
- Children's playground: with wood, tables and benches, toilet and water, playground at the edge of the forest
- Marienhöhe (Tannwald): with wood, tables/benches, water, lots of space
- Wyssig: grill sites with wood; benches
- Vantage point Hoch Flue: grill sites, benches, perfect view
- Bergseeli: at lakeside; swimming area (Admission: CHF 4.50)

Sights

- Haus zur Treib: assembly hall for the old Swiss Confederation of 1482
- Rütli: peaceful forest glade above Lake Uri; considered to be the place where Switzerland was founded in 1291
- Schillerstein: memorial stone for Friedrich Schiller, author of the drama "Wilhelm Tell" in 1859
- Beroldingen castle: small castle (1500), located on the Swiss Path to Bauen
- Pilgrimage chapel: Maria Sonnenberg chapel, built in 1666, with painting of the Virgin Mary dating from 1350, Virgin Mary carillon made in 1384, votive candles and beautiful choir railing; www.maria-sonnenberg.ch

- "Schiller-Balkon": terrace with panoramic view of the scene of Friedrich Schiller's legend of William Tell

Restaurants

Restaurant Alpenblick

Outdoor terrace, specialty weeks, fish from the region; situated directly on the Swiss Path, before the turn-off to Bauen
Telephone +41 (0)41 820 12 89,
e-mail gut-essen@bluewin.ch

Restaurant Volligen

Terrace with lake view, party tent and recreation rooms; cheese quiche and light summer specialties; situated between Rütli and Treib
Telephone +41 (0)41 820 15 62
e-mail rest.volligen@bluewin.ch

Cheese Dairy in Seelisberg

Tours and tastings (advance-booking required), house's own cheese as well as cheese specialties from the region; 8 minutes from the mountain railway station on the Swiss Path
Telephone +41 (0)41 820 29 22
Internet www.seelisberg.ch

GoldiFamilien-Safari



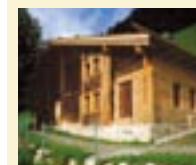
Klewenalp–Stockhütte–Seelisberg

The most diverse round trip in Switzerland. With various cable cars railways, PostAuto and boat trips as well as hiking. From Beckenried Emmetten, Seelisberg, Brunnen or Gersau.

Contact:

Telephone +41 (0)41 820 15 63
Internet www.klewenalp.ch, www.seelisberg.com

Youth Hostel



Gadenhaus Stöck

Rooms with 2, 4, 7 and 12 beds, near Rütli, rustic style, maximum 25 guests, with kitchen facilities
Telephone +41 (0)41 820 52 32
e-mail seelisberg@youthhostel.ch
CHF 19–21/PERSON
EUR 13–15/PERSON

FURTHER ACCOMMODATIONS AND VACATION APARTMENTS CAN BE FOUND AT
WWW.SEELISBERG.COM

Information

Seelisberg Tourismus
Bahnhofplatz 1
CH-6377 Seelisberg

Telephone +41 (0)41 820 15 63
Fax +41 (0)41 820 49 07
e-mail info@seelisberg.com
Internet www.seelisberg.com

Bauen/Isleten

The South begins in Bauen!

Bauen – a village in bloom. Thanks to its location on the sheltered bay on the western shore of Lake Uri, Bauen enjoys a particularly mild climate. Southern vegetation such as palm trees, fig and banana trees bloom here – and even bear fruit. Isleten – a paradise for windsurfers. There is also a cliff climbing facility here. At both locations there is a boat landing, as well as public swimming facilities.



Excursions

- Boat trip on Lake Lucerne
- Hiking on the Swiss Path
- Isleten: public swimming facilities with grill site, toilets at the Hotel/Restaurant Seegarten
- Bauen: public swimming facilities, grill site, playground 200 m away, changing cabins and toilets

Hiking tips

- Various hiking trails in the direction of Isenthal, Seelisberg or Seedorf

Sights/Museums

- Church of St. Ida, built in the 18th century in the classicist style
- Monument to Father Alberick Zwysig, composer of the Swiss national anthem

Restaurant



Gasthaus Zwysighaus

Delicious seasonal dishes; member of the Swiss guild of chefs. Fishcakes “par excellence”. Simply special, especially simple. Closed on Mondays and Tuesdays.

Telephone +41 (0)41 878 11 77

Fax +41 (0)41 878 10 77

e-mail zemp@zwyssighaus.ch

Internet www.zwyssighaus.ch

Birthplace of Pater Alberik Zwysig, composer of the Swiss national anthem

Hotels



Hotel Schiller

Telephone +41 (0)41 878 11 55

Fax +41 (0)41 878 10 55

e-mail schiller.bauen@bluewin.ch

Internet www.schiller-bauen.ch

CHF ⚡ FROM 65 ⚡⚡ FROM 130

EUR ⚡ FROM 47 ⚡⚡ FROM 93



Hotel/Restaurant Seegarten

Telephone +41 (0)41 878 11 05

Fax +41 (0)41 878 13 98

e-mail info@seegarten-isleten.ch

Internet www.seegarten-isleten.ch

CHF ⚡⚡ FROM 120

EUR ⚡⚡ FROM 86



Gasthaus/Restaurant Schützen

Telephone +41 (0)41 878 10 50

Fax +41 (0)41 878 10 60

e-mail info@schuetzen-bauen.ch

Internet www.schuetzen-bauen.ch

CHF ⚡ FROM 29 ⚡⚡ FROM 58

EUR ⚡ FROM 21 ⚡⚡ FROM 36

Routes: Altdorf–Seedorf–Isleten–Isenthal (–Bauen)
Altdorf–Flüelen–Beckenried–Stans (–Seelisberg)
Flüelen–Altdorf–Klausen–Linthal
Sisikon–Riemenstalden

PostAuto

DIE POST 



Die Schweizerische Post

PostAuto

Regionalzentrum Zentralschweiz

Landenbergstrasse 36

6002 Luzern

Telephone +41 (0)41 368 10 10

Fax +41 (0)41 368 10 11

e-mail postautozch@post.ch

Internet www.postauto.ch/lu

Information

TOURIST INFO URI

Tellspielhaus

Schützengasse 11, Postfach

CH-6460 Altdorf

Telephone +41 (0)41 872 04 50

Fax +41 (0)41 872 04 51

e-mail mail@i-uri.ch

Internet www.i-uri.ch

Isenthal



Isenthal, at 778 m, is on the edge of the Swiss Path, away from the hustle and bustle. It is a destination for excursions with many hiking and climbing possibilities. Isenthal can be reached from Bauen on the Swiss Path via the old Bauen–Bärchi–Isenthal–Isleten road, by Postbus on the Altdorf–Flüelen–Isleten–Isenthal–St. Jakob route, or by car over the imposing mountain road. Above Lake Uri, Isenthal is a prime location for hiking and climbing. A visit is certainly worth your while.

Hotels



Hotel Urirotstock

Telephone +41 (0)41 878 11 52
 Fax +41 (0)41 878 13 33
 e-mail info@urirotstock.ch
 Internet www.urirotstock.ch
 CHF ⚡ 55–65 ⚡⚡ 45–50/PERSON
 EUR ⚡ 39–46 ⚡⚡ 32–36/PERSON



Gasthaus Tourist

Telephone +41 (0)41 878 11 51
 Fax +41 (0)41 878 08 51
 e-mail info@gasthaustourist.ch
 Internet www.gasthaustourist.ch
 CHF ⚡ 55–63 ⚡⚡ 45–50/PERSON
 EUR ⚡ 39–45 ⚡⚡ 31–34/PERSON



Berggasthaus Gitschenen

Telephone +41 (0)41 878 11 58
 Fax +41 (0)41 878 10 38
 e-mail gasthaus@gitschenen.ch
 Internet www.gitschenen.ch
 CHF ⚡ FROM 75 ⚡⚡ FROM 60/P. ⚡⚡⚡ FROM 45/P.
 EUR ⚡ FROM 50 ⚡⚡ FROM 39/P. ⚡⚡⚡ FROM 29/P.

Alpine accommodations

Berggasthaus Musenalp (Summer only)

Telephone +41 (0)41 878 11 22 (summer)
 Telephone +41 (0)41 870 73 51 (winter)

Gitschenhörelihütte (mountain hut)

No warden; obtain key at:

Telephone +41 (0)41 878 11 62 (summer)
 Telephone +41 (0)41 878 11 27 (winter)



Berggasthaus Biwaldalp (Summer only)

Telephone +41 (0)41 878 11 62 (summer)
 Telephone +41 (0)41 870 14 30 (winter)
 Dormitory and rooms

Dormitory accommodations



Turnhalle Isenthal

Dormitory accommodations for maximum 38 guests; cooking facilities
 Telephone +41 (0)79 482 03 00
 Fax +41 (0)41 878 10 71
 e-mail isenthal@bluewin.ch
 Internet www.isenthal.ch



Naturfreundehaus St. Jakob

Dormitory accommodations with 28 beds in 6 rooms, kitchen, large playground and quiet location
 Telephone +41 (0)1 768 23 56
 e-mail backoff@bluewin.ch
 Internet www.naturfreunde-cham.ch

Excursions/Cable cars

- Gitschenen cable car
- Gietisfluh cable car
- Fuggelen cable car
- Musenalp cable car

Sights

- Isenthal parish church with the old parsonage
- Ringli House on the old road
- St. Jakob chapel
- Gitschenen mountain chapel
- “Bärentatzen”, traces of the last bear sighted in Uri, 1821

Hiking options

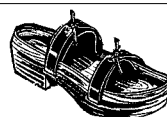
- Gitschenen circular walk
- Gitschenen–Klewenalp mountain hike
- Isenthal Musenalp alpine nature trail–Biwaldalp–Urirotstock
- Isenthal–Fuggelen–Bärchi–Isenthal
- Isenthal–Kleinthal–Schartihöreli–Isenthal
- Bauen–Bärchi–Isenthal–Isleten old road
- Bears’ Trail in Isenthal (Bärenweg): walking tour with information on the last bears to be seen in Isenthal

Highlights



St. Theodul Church

The valley’s landmark is the church, consecrated in 1821 and dedicated to St. Theodul. The church, built in late classicist style according to the plans of Brother Jakob Natter from the Einsiedeln monastery, underwent a complete renovation in 1990 after having been extended and partially renovated many times previously. Today the parish church stands proudly, together with its well-tended mountain cemetery, the newly built burial chapel and the renovated parsonage, built around 1600 and extended with a bishop’s room in the 18th century.



Schreinerei Peter Bissig

- Holzschuhe
- Holzartikel
- Holzspielsachen
- Drechslerarbeiten
- Geschenke in Holz
- Stabellen und Truhen

6461 Isenthal

Tel. + Fax 041 878 11 49



Gitschenen Aerial Cable Car

- A sunny, recreational area with beautiful walks in the midst of a magnificent mountain setting
- Circular walk with nature trail and grill sites
- Pistes for both snowboarding and skiing
- Starting point for ski tours and snowshoe treks

Sleeping in the hayloft



Ferien auf dem Bauernhof

Käthy und Anton Furrer-Gisler
 Kneiwies Gitschenen
 CH-6461 Isenthal
 Telephone +41 (0)41 878 11 33
 e-mail kneiwies@bluewin.ch
 Internet www.gitschenen.ch

Information

Isenthal Tourismus
 CH-6461 Isenthal

Telephone +41 (41) 878 12 89
 Fax +41 (41) 878 12 89
 e-mail tourismus@isenthal.ch
 Internet www.isenthal.ch

Seedorf

Seedorf is often called Lake Uri's little cultural and leisure center. And rightly so, for within its community there are a great number of historical buildings to be seen, for example, the churches of St. Ulrich and St. Verena, the tower of Seedorf, the small A Pro castle with its moat, as well as the St. Lazarus monastery, which is considered to be the most beautiful Baroque building in the region of Uri. Seedorf is also a paradise for those looking for relaxation and sporting activities: a sports field with running track, two sports halls with various facilities, a Vita Parcours, a hall for roller hockey, a tennis hall with two indoor and three outdoor courts, a public outdoor swimming area with beach volleyball, islands for observing nature and swimming, as well as horse riding.



Leisure activities

- Tour of the village with its historical sights: the 17th century Benedictine monastery of St. Lazarus, the 13th century Baroque parish church, the 16th century A Pro castle with its moat, and the 800-year-old tower of Seedorf.
- Reuss delta nature reserve with a variety of swimming areas, nature islands and grill sites
- Hiking or biking along the Reuss
- Cycling tour in the Gitschen valley
- Ride on the cable car to the Gitschen mountain starting point for various walks
- Schopflibach riding school
Telephone +41 (0)41 871 14 73

Restaurant

Seerestaurant

Located directly on the Swiss Path, self-service restaurant with swimming area and large terrace.

Contact: Telephone +41 (0)41 870 72 72
Internet www.gotthardraststaette.ch



Highlights



Uri Mineral Museum

Around 400 valuable mountain crystals, special exhibit and slide show

Opening hours: from 14 May to 16 May every Thursday
Saturday and Sunday from 1–5.30 PM

Contact: Urner Mineralienfreunde
Telephone +41 (0)41 870 44 80/+41 (0)79 388 71 46
Internet www.mineralienfreund.ch



"A Pro" castle with moat

A shining example of the Baroque era is this picturesque house surrounded by water in the lower village.

Contact: Seedorf community offices
Internet www.seedorf-uri.ch

Hotels



Hotel «Am Weg der Schweiz»

Telephone +41 (0)41 870 07 20
Fax +41 (0)41 870 95 07
e-mail hotel@wegderschweiz.ch
Internet www.wegderschweiz.ch

CHF ↓ FROM 65 ♫ 110–130 ♫♫ FROM 150
EUR ↓ FROM 50 ♫ 79–93 ♫♫ FROM 107

Vacation house

Vacation house "Carmen"

Vacation house with kitchen, recreation room, and showers, maximum 38 guests
Telephone +41 (0)41 870 87 04

Museums in Schwyz

MUSEE SUISSE Forum of Swiss History

"Tangible" Swiss history

The national history museum in the alpine region displays the cultural/historical aspects of daily life in the former confederation between 1300 and 1800. More than 800 valuable objects from all over Switzerland can be seen. By means of interactive information points and listening stations, video and PC stations, Switzerland's history is rendered "tangible".

The museum is designed to accommodate 4 languages. There are also current temporary exhibitions, with information about the culture of the alpine region, on a regular basis.

Our current temporary exhibition and events are listed at: www.musee-suisse.ch/Schwyz

Contact: Hofmatt, 6431 Schwyz, Telephone +41 (0)41 819 60 11, Fax +41 (0)41 819 60 10, e-mail: ForumSchwyz@slm.admin.ch, Internet: www.musee-suisse.ch/schwyz
(Tours, workshops, events), opening hours:
Tuesday to Sunday 10 AM to 5 PM



Museum of Swiss Charters

History between myth and reality

The Federal Charter of 1291 – the unique, original, founding document of Switzerland – played an important part in the history of Switzerland. Is he charter really the founding document of the Swiss Confederacy? What can be said about the oaths, pacts, battles and heroes?

Contact: Bahnhofstrasse 20, 6430 Schwyz, Tel. +41 (0)41 819 20 64, Fax +41 (0)41 819 20 69, Internet: www.bundesbriefmuseum.ch, e-mail: bbm.jd@sz.ch (Führungen), Tuesday to Friday 9–11.30 AM and 1.30–5 PM
Saturday and Sunday until the end of April 1.30–5 PM



Ital Reding Hofstatt Schwyz

Impressive buildings with stately rooms

The manor house built in 1609 with its stately rooms, the Baroque garden and the "Bethlehem" House, which dates from 1287, is a unique meeting point in a social and cultural setting.

Contact: Telephone +41 (0)41 811 45 05, Fax +41 (0)41 811 45 07, e-mail: info@irh.ch
(Historical evening walks, room and garden hire, tours of the village) May to October
Tuesday to Friday, 2–5 PM, Saturday and Sunday 10 AM–12 PM and 2–5 PM



Information

infoSchwyz – Tourismusbüro, Bahnhofstrasse 4, Postfach 655, CH-6431 Schwyz
Telephone +41 (0)41 810 19 91, e-mail: infoschwyz@wbs.ch, Internet: www.wbs.ch

Information

Gemeinde Seedorf
Gemeindekanzlei
CH-6462 Seedorf

Telephone +41 (0)41 874 10 10
Fax +41 (0)41 874 10 11
e-mail info@seedorf-uri.ch
Internet www.seedorf-uri.ch

Altdorf



While hiking around Lake Uri, take a detour to Altdorf and enjoy the southern charms of this historical provincial city. Altdorf, with around 8500 inhabitants, is the commercial, political, cultural and social center of Uri. The bus brings you directly to the center, with its historical town hall and monument to William Tell.

Hotels



Hotel Goldener Schlüssel [◆]***

Telephone +41 (0)41 871 20 02
 Fax +41 (0)41 870 11 67
 E-mail info@hotelschluessel.ch
 Internet www.hotelschluessel.ch
 CHF [♂] 80–120 ^{♀♀} 130–180
 EUR [♂] 57–86 ^{♀♀} 93–129



Hotel Höfli [◆]****

Telephone +41 (0)41 875 02 75
 Fax +41 (0)41 875 02 95
 E-mail info@hotel-hoefli.ch
 Internet www.hotel-hoefli.ch
 CHF [♂] 70–130 ^{♀♀} 125–185
 EUR [♂] 50–90 ^{♀♀} 89–130

Excursions/Cable cars

- Altdorf swimming pool: swimming fun with a water slide and solarium
- Eggberge cable car: aerial cable car from Altdorf to Eggberge (1440 m)
- Eggberge mountain inn (see Flüelen)
- Nussbäumli Restaurant: Nussbäumli vantage point with restaurant

Hiking tips

- Instructive "schutz.wald.mensch" nature trail, with eight stops for experiencing and learning
- Eggberge-Biel mountain hike with round-trip ticket for train and bus

Sights/Museums

- Altdorf culture trip: cultural/historical tour of Altdorf
- Uri Historical Museum: important collection
- Various historical destinations: monument to William Tell, Capuchin monastery, classicist St. Martin parish church, town hall
- Theaters: Theater(uri) Tellspielhaus, Kellertheater im Vogelsang
- The Tell Museum in Bürglen: everything you have always wanted to know about the Swiss hero of freedom
- Art tour of Altdorf (guided tour upon request)
- "Haus für Kunst Uri"
- Collaboration with the cultural city of Wiemar and the "Festival City" of Lucerne. www.kulturschweiz.ch

Further leisure activities

- Follow the footsteps of William Tell: guided tour including monument to Tell and the Tell Museum
- Moosbad Exotis Park: aviary and floral park
- Shopping in the historical old town – 80 specialty shops invite you to stop in
- Pleasure Center: sport and fun in the Pleasure Center
- Guided tour of the nature reserve in the Reuss delta
- Bicycle trip to forts and ruins: Rudenz castle, Zwing Uri, Attinghausen fort, etc.
- Sport: paragliding, fishing, climbing, biking, hiking, skiing
- Cinema Leuzinger

The Legend of William Tell



With the receipt of an imperial charter in 1231, Uri was immediately placed under the emperor. The area of what is today central Switzerland had acquired political and economic importance with the opening of the Gotthard Pass at the beginning of the 13th century. Thus, both the dukes of Habsburg and the emperor wanted to increase their influence in Uri. Towards the end of the century, the Habsburgs were sent to the central cantons as governors appointed by the emperor with the objective of oppressing the population.

Governor Hermann Gessler decided to test the allegiance of the people of Uri. He had a pole erected in the square of Altdorf with a Habsburg hat on top and ordered everyone who passed to doff their hats to it as a sign of respect.

William Tell and his son Walter from Bürglen walked heedlessly past the hat – an act for which Tell was severely

punished. He was ordered by the governor to shoot an apple off the head of his own son with a crossbow. The shot was true, and the arrow pierced the apple.

Gessler did not miss the fact that Tell had placed two arrows in his quiver and asked the reason for this. Tell responded angrily that if his shot had missed the apple and hit his son, he would have used the second arrow to shoot Gessler.

For this bold answer, Tell was put in chains and taken to Gessler's boat in Flüelen, in order to then be taken to the fort at Küssnacht for life imprisonment. Just as the boat got underway, a violent storm broke over the lake and the boat threatened to capsize. Gessler and his men recognized that they were in a life-threatening situation. They released Tell, who was just as renowned as a helmsman as a marksman, from

his chains in order to be able to hold the boat on course. His sole objective was to reach the rock ledge on the Axen, with which he was so familiar. He steered the boat to the shore, seized his crossbow, jumped to the rock and gave the boat a mighty shove back out into the wind-whipped waters. Tell hurriedly took the shortest way to the "Hohle Gasse", near Küssnacht, where he found and shot the tyrannical governor Gessler with the second arrow which he had hidden in his quiver in Altdorf. News of Tell's act quickly spread through the entire country and strengthened the freedom and independence movement in the three original cantons in Switzerland.

Information

TOURIST INFO URI
 Tellspielhaus
 Schützengasse 11, Postfach
 CH-6460 Altdorf

Telephone +41 (0)41 872 04 50
 Fax +41 (0)41 872 04 51
 e-mail mail@i-uri.ch
 Internet www.i-uri.ch

Flüelen

The harbor town of Flüelen in Uri has always been a popular stop on the Gotthard route for rest and relaxation. The site continues to enjoy hotel, restaurant and tourism activity thanks to its favorable location on the Gotthard line and the Swiss Path. The lake promenade and the many possibilities for sports on the lake and in the mountains make the vacation spot particularly attractive. Easily reached by boat, train and bus, Flüelen is the ideal point for starting and ending enjoyable day trips. Flüelen lies at the mid-point of the Swiss Path and is thus the perfect place for everyone for an overnight stay.



Excursions/Mountain railways

- Lake Lucerne boat trip
- Eggberge, mountain railway
- Oberaxen, mountain railway

Sights

- "Föhnwacht" painting by H. Danioth, train station
- Old church
- Rudenz castle
- "Schwurhände" iron sculpture

Lido Café in Flüelen



Guests are welcome in the lido whether they wear swimwear or not. Until Whitsun, the lido is open every weekend from 11 am, after that daily – in the high season from 10 am. Brunch is served every Sunday. On Mother's Day there is a special breakfast for mothers. Claudia and Cilly would be happy to give you information.

Contact: Telephone +41 (0)79 519 51 09 oder
Telephone +41 (0)79 271 58 31

Restaurants

Urnerhof,

Wirtschaft zum Chuchichessi

In the center of the village, international cuisine, open 7 days a week in high season.

Telephone +41 (0)41 872 10 20

Bistro Schiffländi

Unique restaurant directly on the lake, with wonderful panoramic view, outdoor restaurant, self-service.

Telephone +41 (0)41 870 05 10

Pizzeria zum Anker

Italian specialties, various pizzas, pizza delivery, closed on Mondays.

Telephone +41 (0)41 871 30 30

Restaurant Schützenstube

At the southern entrance to the village; outstanding local cuisine. Closed on Sundays from 6 PM and Mondays.

Telephone +41 (0)41 870 12 57

Seerestaurant Apertura

Located directly on the Swiss Path, with lake terrace, special cuisine, a touch of Italy. Open 7 days a week from March to the end of December.

Telephone +41 (0)41 872 07 02
Internet www.apertura.ch



Hotels



Hostellerie Sternen****

Telephone +41 (0)41 875 03 03
Fax +41 (0)41 875 03 05
e-mail info@bonetti.ch
Internet www.bonetti.ch

CHF ⚡ 115–140 ⚡⚡ 175–210
EUR ⚡ 82–100 ⚡⚡ 125–150



Hotel Tourist***

Telephone +41 (0)41 874 00 50
Fax +41 (0)41 874 00 60
e-mail info@hotel-tourist.ch
Internet www.hotel-tourist.ch

CHF ⚡ 60–80 ⚡⚡ 110–120
EUR ⚡ 43–57 ⚡⚡ 75–85



Hotel Weisses Kreuz-Schweizerhof***

Telephone +41 (0)41 870 17 17
Fax +41 (0)41 870 17 75
e-mail info@weisseskreuz-fluelen.ch
Internet www.weisseskreuz-fluelen.ch

CHF ⚡ 70–80 ⚡⚡ 120–130
EUR ⚡ 47–54 ⚡⚡ 80–87



Hotel Hirschen***

Telephone +41 (0)41 870 12 01
Fax +41 (0)41 871 03 77
e-mail info@hirschen-fluelen.ch
Internet www.hirschen-fluelen.ch

CHF ⚡ 80 ⚡⚡ 130
EUR ⚡ 57 ⚡⚡ 93



Hotel/Restaurant Edelweiss

Telephone +41 (0)41 870 13 12
Fax +41 (0)41 871 47 78
Internet www.gasthof-edelweiss.ch

CHF ⚡ 40–50 ⚡⚡ 75–90
EUR ⚡ 29–36 ⚡⚡ 54–65



Gasthaus zur Rose

Thai cuisine
Telephone +41 (0)41 870 12 56
Fax +41 (0)41 870 12 56
e-mail radchana@bluewin.ch

CHF ⚡ FROM 45 ⚡⚡ FROM 85
EUR ⚡ FROM 33 ⚡⚡ FROM 60

Camping



Surfcenter Geni Jauch

Telephone +41 (0)41 870 92 22
Fax +41 (0)41 870 92 16
e-mail info@windsurfing-urnersee.ch
Internet www.windsurfing-urnersee.ch

Information

Flüelen Tourismus

Postfach 1
CH-6454 Flüelen

Telephone +41 (0)41 870 42 23
Fax +41 (0)41 870 42 35
e-mail tourismus@flueelen.ch
Internet www.flueelen.ch

Weather camera, Flüelen:

www.windsurfing-urnersee.ch

Sisikon



Sisikon (453 m), the gateway to Uri, is an ideal vacation spot in which to stop along the Gotthard route, with fabulous views of the lake and mountains and a variety of hiking and excursion possibilities. Historic sites (Tell Chapel, Rütli, Treib, Tell Monument) in the 3 original cantons of Switzerland can easily be reached by boat, car or train from here. Between the Tell Chapel and Sisikon on the Swiss Path there are several grill sites directly on the lake. In Sisikon one can take a refreshing swim.

Hotels



Hotel Tellsplatte^{◆***}

Telephone +41 (0)41 874 18 74
 Fax +41 (0)41 874 18 75
 e-mail info@tellsplatte.ch
 Internet www.tellsplatte.ch

CHF	↓ FROM 70	↑↑ FROM 140
EUR	↓ FROM 50	↑↑ FROM 100



Hotel Eden

Telephone +41 (0)41 820 41 41
 Fax +41 (0)41 820 51 06
 e-mail info@hotel-eden-sisikon.ch
 Internet www.hotel-eden-sisikon.ch

CHF	↓ FROM 70	↑↑ FROM 110
EUR	↓ FROM 50	↑↑ FROM 79



Hotel Axenstrasse

Telephone +41 (0)41 820 10 58

CHF	↓ FROM 35	↑↑ FROM 70
EUR	↓ FROM 25	↑↑ FROM 50



Hotel Sternen

Telephone +41 (0)41 820 17 04
 Fax +41 (0)41 820 17 04
 e-mail rene.hufschmid@bluewin.ch

CHF	↓ FROM 60	↑↑ FROM 100
EUR	↓ FROM 43	↑↑ FROM 71

Camping



Camping Bucheli

Idyllically situated campground on the lake surrounded by mountains. Limited space; reservation recommended.
 Telephone +41 (0)41 820 19 81

Excursions/Railways

- Aerial cable car to the Axen
- Panorama path
- Crossing by boat to the Rütli
- Nostalgic rides on steamboats

Sights

- Largest carillon in Switzerland; located below Hotel Tellsplatte
- William Tell Chapel

Hiking tips

- Panorama path along the lake
- Mountain hike on the Rophaien (2078 m)
- Various hikes starting from the Lidernen SAC hut
- Short hike to Tellsplatte (45 minutes)

Highlights

- Private boat harbor
- Beautiful lakeside promenade

Restaurants/Groceries

Laterne Pizzeria italiana da Bruno

Pizza baked in wood oven
 Telephone +41 (0)41 820 26 55

Restaurant/Snackbar Tellsplatte

Comfortable self-service restaurant directly adjacent to the Tellsplatte boat landing on the Swiss Path. Restaurant seats 20 guests, outdoor terrace seats 80.
 Telephone +41 (0)41 870 30 52
 Internet www.seerest-tellsplatte.ch

Restaurant Bären

Bahnhofstrasse 6, Sisikon
 Telephone +41 (0)41 820 52 74
 info@baerensisikon.ch

Restaurant zum Goldenen Fisch

Telephone +41 (0)41 820 22 12

Bäckerei Jud Sisikon/Morschach

Obere Dorfstrasse 6
 Tourist provisions
 Telephone +41 (0)41 820 18 17



Information

Sisikon Tourismus
 CH-6452 Sisikon

Telephone +41 (0)41 820 30 00
 Fax +41 (0)41 820 30 00
 e-mail info@sisikon.ch
 Internet www.sisikon.ch

Morschach

The idyllic mountain village on a sunny terrace above Lake Lucerne. Panoramic views of the lake and mountains, well-kept hiking trails, rest areas and playgrounds, picnic and grill sites, mountain railways to the Stoos – Fronalpstock with its 360° panorama, as well as limitless possibilities at the Swiss Holiday Park make Morschach a popular location for summer and winter vacations.



Excursions/Mountain railways

- View from the Stoos–Fronalpstock at 1922 m (best mountain for views on the Swiss Path, with 360° panorama)
- Morschach–Stoos, excellent skiing and hiking area
- Buses every half hour Brunnen–Morschach

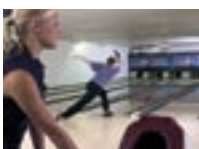
Hiking tips

- Kapellweg: one-hour circular walk passing the loveliest churches and chapels

Further leisure ideas

- Swimming in the spa pool at Swiss Holiday Park: Swiss holiday and leisure park
- Open-air alpine swimming pool at Stoos
- Forest park, park facilities with vantage points, rest areas and playgrounds, grill sites, Vita Parcours
- Visit to the Laui alpine dairy on the Stoos
- “Morschacher Wander(s)pass” with practical hiking suggestions for all
- Alphorn music at sunset every Sunday evening from May to September
- Diverse program of events for guests

Highlights



Swiss Holiday Park

After an enchanting walk on the Swiss Path, enjoy the variety of activities at our spa!

- Reasonably priced rooms for families and group accommodation
- Pool: jacuzzi, massage water jets, 100 m slide, children’s wading pool etc.
- Wellness oasis with Roman-Irish thermal baths, salt baths, massage, sauna and more
- Sport and games: bowling, billiards, badminton, squash, etc.
- Evening entertainment: Travellers’ Bar, Fun Factory
- Culinary: Mediterranean, Asian and Swiss cuisine

Contact: Swiss Holiday Park, 6443 Morschach
Telephone +41 (0)41 825 50 50
www.swissholidaypark.ch

Sights/Museums

- Three chapels (Lourdes grotto, parish church of St. Gallus, chapels of Mary and Francis)
- “Five-senses trail” to “Kükelhaus” near the Antoniushaus Mattli, playgrounds

Restaurants

Hirschen

Relaxed restaurant, closed on Mondays. The culinary delights from our kitchen and cellar are a real treat.

Restaurants at Swiss Holiday Park

Panorama, Silk Road No. 88, Schwyzer-Stube, sun terrace

Rütlistube at Antoniushaus Mattli

Terrace with panoramic view of the lake and mountains, open daily.

Bellevue

Restaurant terrace with panoramic view, closed on Mondays and Tuesdays

Pizzeria Ristorante Roma

Italian restaurant with pizzas baked in wood oven, Piano bar, sun terrace, open daily

Nägelisgärtli

Cozy lounge with house smoked specialties, closed on Tuesdays and Wednesdays

Hotels



Swiss Holiday Park*****

Telephone +41 (0)41 825 50 50
Fax +41 (0)41 825 50 05
e-mail info@shp.ch
Internet www.swissholidaypark.ch
CHF ⚡ 144–312 ⚡⚡ 180–390 /WITH BREAKFAST
EUR ⚡ 103–223 ⚡⚡ 119–260 /WITH BREAKFAST



Seminar- und Bildungszentrum Mattli

Telephone +41 (0)41 820 22 26
Fax +41 (0)41 820 11 84
e-mail info@antoniushaus.ch
Internet www.antoniushaus.ch
CHF ⚡ 70–95 ⚡⚡ 130–170 /WITH BREAKFAST
EUR ⚡ 47–63 ⚡⚡ 87–113 /WITH BREAKFAST



Hotel Bellevue

Telephone +41 (0)41 820 18 48
Fax +41 (0)41 820 04 07
e-mail bellevuemorschach@bluewin.ch
Internet www.marktkreisel.ch/bellevue
CHF ⚡ FROM 70 ⚡⚡ FROM 120 /WITH BREAKFAST
EUR ⚡ FROM 50 ⚡⚡ FROM 80 /WITH BREAKFAST



Hotel Albergo Roma

Telephone +41 (0)41 820 69 70
Fax +41 (0)41 820 69 71
e-mail roma_pizzeria@freesurf.ch
CHF ⚡ FROM 70 ⚡⚡ FROM 140 /WITH BREAKFAST
EUR ⚡ FROM 50 ⚡⚡ FROM 90 /WITH BREAKFAST

Sleep in the hayloft/Tents



Ferienhof Rüti

Vacation farm with two sleeping and hay spaces for 8 guests (family room) and 20 guests (group room), as well as a small place for tents.

Telephone +41 (0)41 820 53 09
e-mail schullerichard@hotmail.com
Internet www.marktkreisel.ch/schuler
CHF ⚡⚡⚡ FROM 22/PERSON WITH BREAKFAST
EUR ⚡⚡⚡ FROM 16/PERSON WITH BREAKFAST



Information

Morschach Tourismus
CH-6443 Morschach

Telephone +41 (0)41 820 11 58
Fax +41 (0)41 820 42 25
e-mail morschachtourismus@bluewin.ch
Internet www.morschach.ch

Brunnen

Spend unforgettable days in this area of unique hiking, lake and mountain scenery. Brunnen is situated in an ideal location for transportation connections: railways, extensive Postbus network, highway access, boat, Urmiberg/Rigi cable car.



Hotels



Seehotel Waldstätterhof ⬆️*****

Telephone +41 (0)41 825 06 06
 Fax +41 (0)41 825 06 00
 e-mail info@waldstaetterhof.ch
 Internet www.waldstaetterhof.ch

CHF ⬇️ 160–220 ⬆️⬆️ 270–430
 EUR ⬇️ 107–147 ⬆️⬆️ 180–287



Hotel Alpina ⬆️****

Telephone +41 (0)41 820 18 13
 Fax +41 (0)41 820 55 93
 e-mail stay@alpina-brunnen.ch
 Internet www.alpina-brunnen.ch

CHF ⬇️ 90–100 ⬆️⬆️ 135–180
 EUR ⬇️ 59–65 ⬆️⬆️ 88–118



Hotel Schmid & Alfa

Telephone +41 (0)41 820 18 82
 Fax +41 (0)41 820 11 31
 e-mail mail@schmidalfa.ch
 Internet www.schmidalfa.ch

CHF ⬇️ 60–110 ⬆️⬆️ 110–180
 EUR ⬇️ 40–73 ⬆️⬆️ 73–120



Hotel Bellevue au Lac

Telephone +41 (0)41 820 13 18
 Fax +41 (0)41 820 38 89
 e-mail bellevue@email.ch
 Internet www.bellevue-brunnen.ch

CHF ⬇️ FROM 95 ⬆️⬆️ FROM 160
 EUR ⬇️ FROM 60 ⬆️⬆️ FROM 106



City Hotel

Telephone +41 (0)41 825 10 10
 Fax +41 (0)41 825 10 11
 e-mail info@city-brunnen.com
 Internet www.city-brunnen.com

CHF ⬇️ FROM 90 ⬆️⬆️ FROM 180
 EUR ⬇️ FROM 80 ⬆️⬆️ FROM 140

Country Inn/Restaurant



Gasthaus PLUSPUNKT

People with minor disabilities work together with expert chefs; their cuisine is superb. Enjoy the excellent hospitality.

Telephone +41 (0)41 825 11 80
 Fax +41 (0)41 825 11 81
 e-mail info@pluspunkt.ch
 Internet www.pluspunkt.ch



Restaurant Timpelweid

The sun terrace above Brunnen – with magnificent views of the Swiss Path

Telephone +41 (0)41 820 14 05
 Fax +41 (0)41 820 14 05
 Internet www.urmiberg.ch

Excursions/Mountain railways

- Family excursion: Urmiberg cable car up to the Rigi, terrace restaurant, spectacular view
- Boat ride on Lake Lucerne
- Mountain railway to Stoos-Fronalpstock (1922 m), ski resort and hiking area

Further leisure ideas

- Cultural trail
- Sculpture week
- Splendid August 1st celebrations
- Concerts on the lake promenade every Sunday from June to September
- Folklore evenings with alphorn players
- Indoor swimming pool, lake swimming area, fitness center, tennis courts
- Walking the Swiss Path, “Waldstätterweg” or “Panoramaweg”
- Fishing license
- Vita Parcours
- Paragliding and tandem flights
- Cycling in the Swiss Knife Valley
- Variety of interesting boat trips with excellent offers

Sights/Museums

- Ingenbohl monastery in Brunnen, Krypta
- Tour of Bundeskapelle dating from 1635
- The Swiss kirsch road, Dettling distillery with visitors' center
- Galerie am Leewasser

Cultural



Galerie am Leewasser

The Galerie am Leewasser is located in the village center of Brunnen. Contemporary art and theme-based exhibitions are regularly displayed for the public in the modern rooms.

Opening hours: Wednesday to Sunday 2–10 PM

Contact: Telephone +41 (0)41 820 08 88
 www.galerie-am-leewasser.ch

Dettling Kirschwelt



Reservation at the Swiss kirsch road GmbH

Kirschstrasse 1, Postfach 64, 6414 Oberarth

Contact: Telephone +41 (0)41 855 50 58
 info@kirschstrasse.ch, www.kirschstrasse.ch

Campgrounds/Group tents



Camping Hopfren

Directly on the lake, new sanitation facilities, kiosk

Telephone +41 (0)41 820 18 73
 Fax +41 (0)41 820 18 73
 Internet www.camping-brunnen.ch



Camping Urmiberg

Drain for chemical toilets, electricity, complete sanitation, hook-up for RV's, washing machine

Telephone +41 (0)41 820 33 27
 Fax +41 (0)41 820 33 27
 e-mail campingurmiberg@campingurmiberg.ch
 Internet www.campingurmiberg.ch

Accommodations in a monastery



Kloster Ingenbohl

Klosterstrasse 10
 6440 Brunnen

Telephone +41 (0)41 825 20 00
 e-mail info@kloster-ingenbohl.ch
 Internet www.kloster-ingenbohl.ch

Information

Brunnen Tourismus
 Bahnhofstrasse 15
 CH-6440 Brunnen

Telephone +41 (0)41 825 00 40
 Fax +41 (0)41 825 00 49
 e-mail info@brunnentourismus.ch
 Internet www.brunnentourismus.ch

TELL-PASS

REGIONALPASS ZENTRALSCHWEIZ



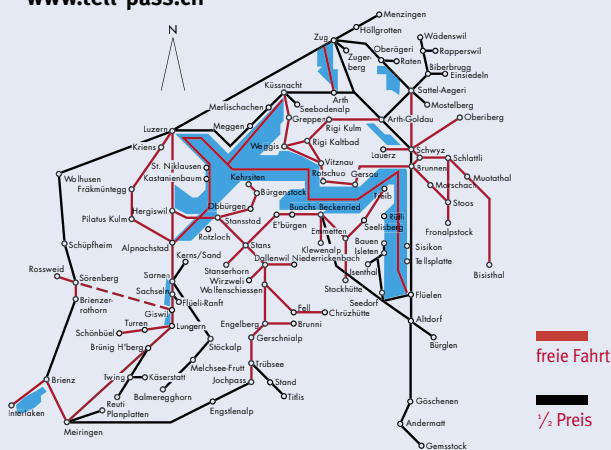
Explore and enjoy the “Swiss Path” region with the Tell Pass – the most economical way to see all of Central Switzerland

5 days unlimited travel
with the 15-day Tell Pass
CHF 188.– / € 129.65

2 days unlimited travel
with the 7-day Tell Pass
CHF 140.– / € 96.55

Travel is half-price on the remaining days. The Tell Pass can be obtained from April to October from tourism offices, hotels, mountain railways and from boat ticket offices.

www.tell-pass.ch



Travel and save with the many transportation companies



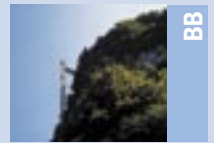
AAGS

Auto AG Schwyz
www.aags.ch



AGS

Andermatt Gotthard Sportbahnen AG
www.andermatt.ch



BB

Bürgenstock-Bahnen
www.buergenstockbahn.ch



BBE

Bergbahnen Beckenried-Emmetten AG
www.klewenalp.ch



BET

Bergbahnen Engelberg-Trübsee-Titlis
www.titlis.ch



EB

Luftseilbahn Engelberg-Brunni AG
www.brunni.ch



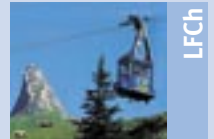
LDN

Luftseilbahn, Dallenwil-Niederrickenbach
www.maria-rickenbach.com



LDW

Luftseilbahn Dallenwil-Wirzweli
www.wirzweli.ch



LFCh

Luftseilbahn Fell-Chrüzhütte AG
www.regionbannalp.ch



LKÜS

Luftseilbahn Küsnacht-Seebodenalp AG
www.luftseilbahnseebodenalp.ch



LMS

Luftseilbahn Morschach-Stoos AG
www.sporthotel-stoos.ch



LSÖR/LSBR

Luftseilbahn Sörenberg-Rosswald AG/Sörenberg-Brienzer Rothorn AG
www.soerenberg.ch



zb

zb Zentralbahn AG
www.zentralbahn.ch



PB

Pilatus-Bahnen
www.pilatus.ch



LLS

Luftseilbahn Lungern-Schönbühl
www.panoramawelt.ch



RB

Rigi-Bahnen
www.rigi.ch



SGV

Schiffahrtsgesellschaft des Vierwaldstättersees
www.lakelucerne.ch



SGZ

Schiffahrtsgesellschaft für den Zugersee
www.zugersee-info.ch



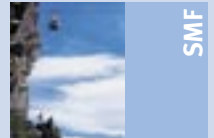
ZBB

Zugerbergbahn AG
www.zvb.ch



SHAG

Sattel-Hochstuckli AG
www.sattel-hochstuckli.ch



SMF

Sportbahnen Melchsee-Frutt
www.melchsee-frutt.ch



SSSF

Sportbahnen Schwyz-Stoos-Fronalpstock AG
www.stoos.ch



SthB

Stanserhorn-Bahn-Gesellschaft
www.stanserhorn.ch



TSB

Treib-Seelisberg-Bahn AG
www.seelisberg.com

Info/Booking

Luzern Tourismus
Zentralstrasse 5
CH-6002 Luzern

Phone +41 (0)41 227 17 27
Fax +41 (0)41 227 17 20
e-mail luzern@luzern.org
Internet www.luzern.org

Vierwaldstättersee Tourismus
Bahnhofplatz 4
CH-6371 Stans

Phone +41 (0) 41 610 88 33
Fax +41 (0) 41 610 88 66
e-mail info@lakeluzern.ch
Internet www.lakeluzern.ch